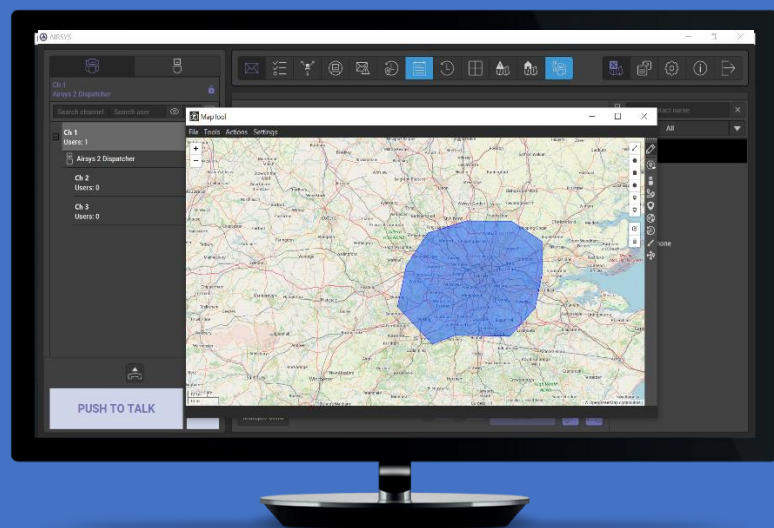


A.RODON

Quick Start Guide

**THIS QUICK START
HELPS YOU TO
UNDERSTAND THE
CONFIGURATION
AND HANDLING IN
A.RODON QUICKLY
AND EASY.**



CONTACTS

Airsys.Cloud
Unit 1, The Westgate Centre
Premier Way, Luzborough Lane
Romsey
Hampshire
SO51 9DH

Tel: 0238 071 8700
E-Mail: enquiries@airsys.cloud

SOCIAL MEDIA



1 INSTALLATION

1.1 REQUIREMENTS

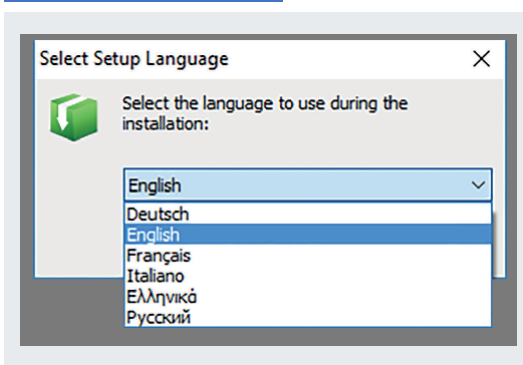
The A.rodon application can be installed on a desktop pc or laptop and is compatible with windows 7/8/10. To run A.rodon or .flex (desktop version) applications, a computer needs the listed recommended information:

Components	Recommended
Operating system	Windows 7 32/64, Windows 8 32/64, Windows 10 32/64
Processor	Processor with minimum 2 GHz clock frequency
Memory	8 GB RAM
Hard Drive Space	500 GB
Display	Standard colour display
Ethernet	Standard network card
Audio	Audio interfaces for Loudspeakers and Microphone
USB interface button	Optionally for accessories like Desktop Mic. with PTT
Prerequisites	Java SE Runtime Environment latest version

1.2 INSTALLATION

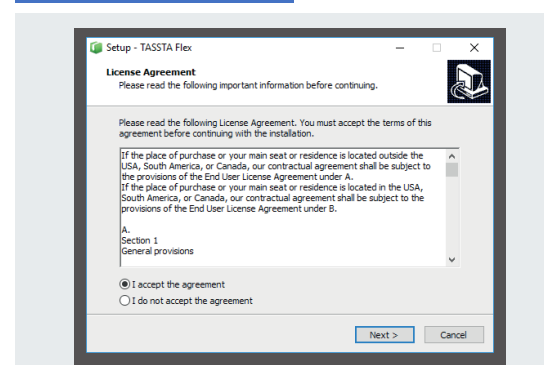
Download the installation file from AIRSYS.CLOUD official website: www.airsys.cloud.co.uk run the installation file and follow the procedure.

1.2.1



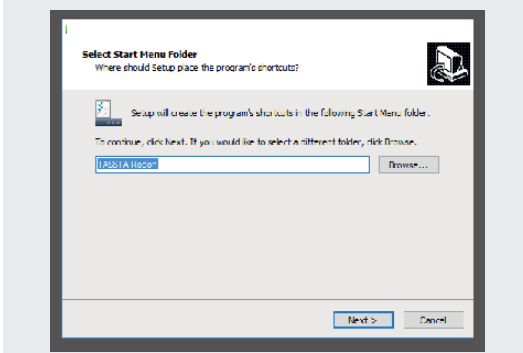
At the first step, select the language to use during the installation and click OK.

1.2.2



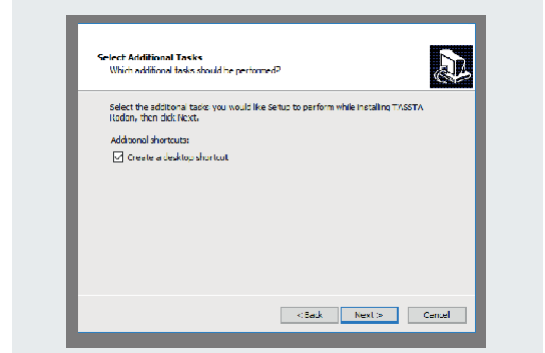
Read the License Agreement and accept it. Mark the corresponding checkbox and click "Next".

1.2.3



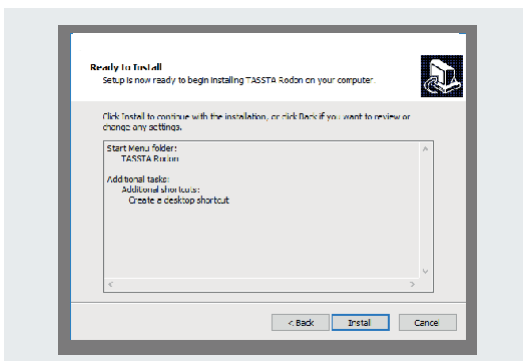
Select Start Menu folder and click NEXT. Click BROWSE to select a different folder.

1.2.4



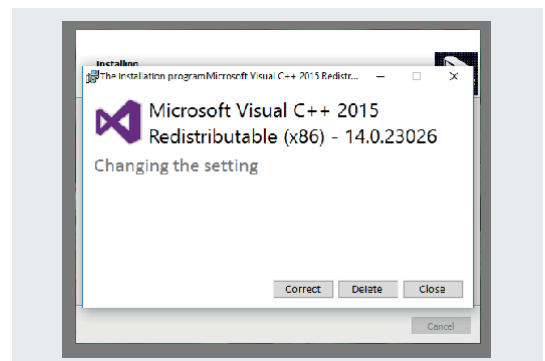
Select additional tasks while installing the application, then click NEXT. Mark the checkbox "Create a desktop shortcut" to have A.Rodon shortcut on your desktop.

1.2.5



Ready to install. Click Install to continue the installation or click Back to review or change any settings.

1.2.6



The installer offers the Microsoft Visual C++ installation. Do not ignore this step. Click Correct to continue or Close to skip this step.

1.2.7

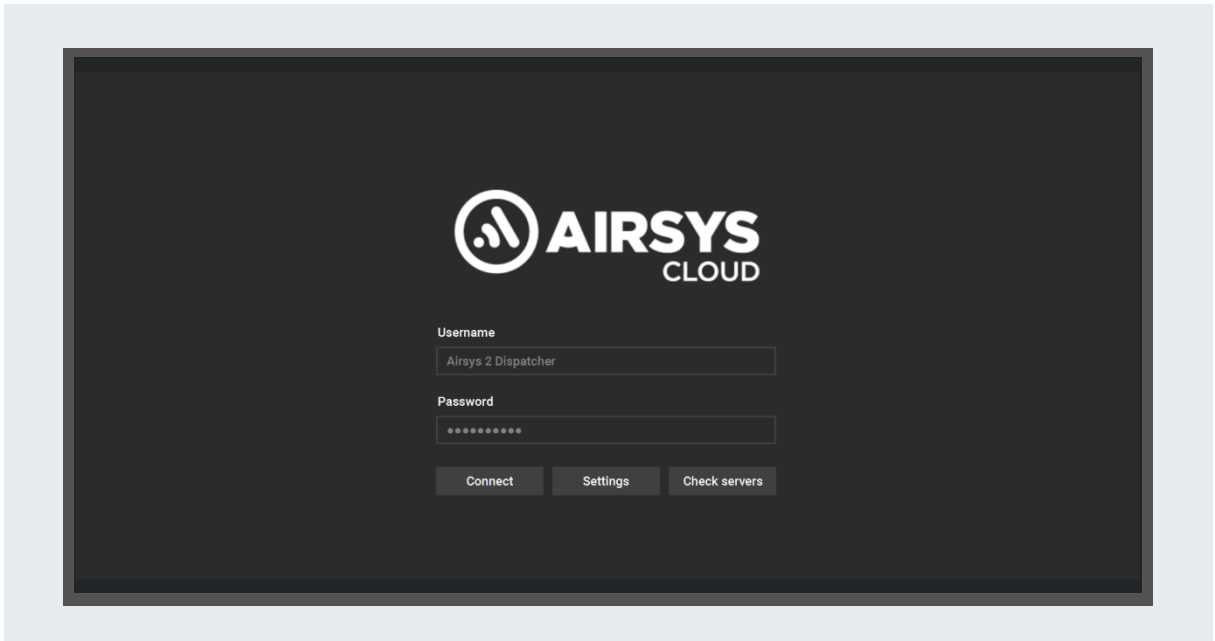


The installation process will be completed within a minute. Please wait for the application to inform about the end of the process.

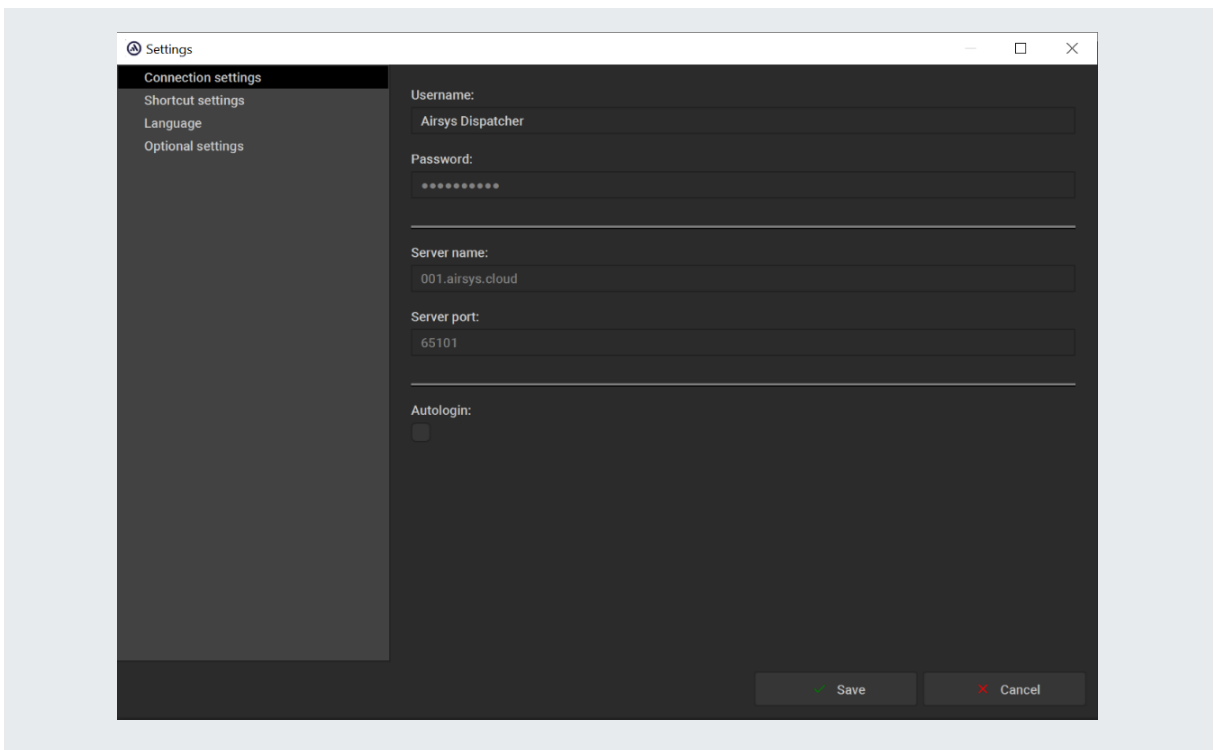
Press Finish.

2 START

2.1 Click SETTINGS and enter your login information.

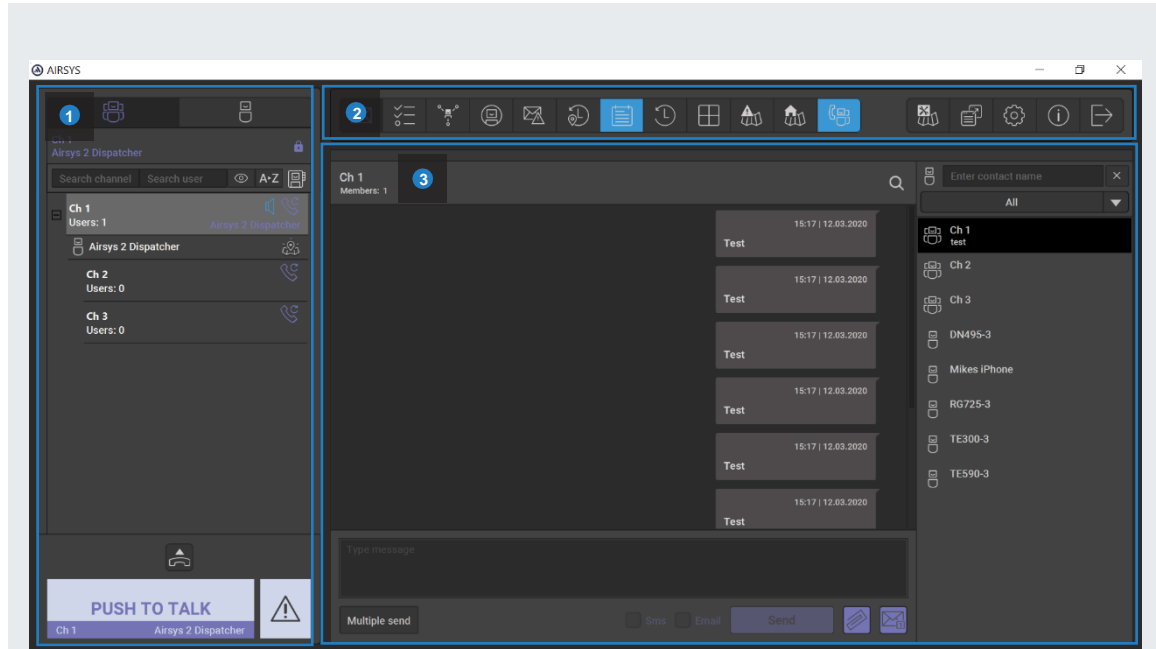


2.2 Please fill in the required fields (USERNAME, PASSWORD, SERVERNAME, PORT) and then click save.



3 OVERVIEW OF THE FUNCTIONS

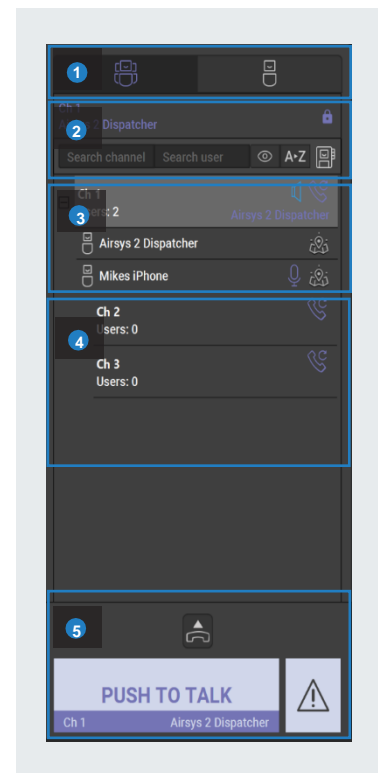
3.1



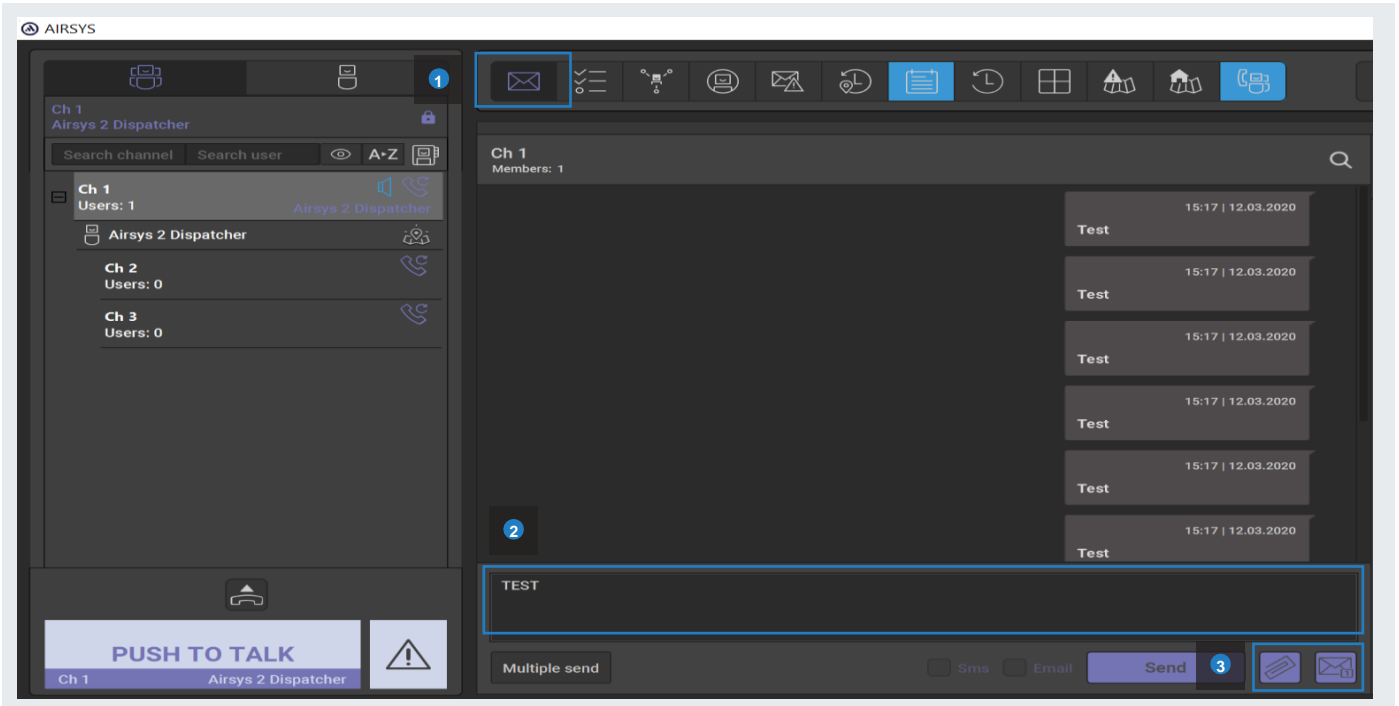
- 1 Communication area
- 2 Activated plugins
- 3 Plug-in window

3.2

- 1 Channel (group) and user list
- 2 Zone manager - choose the zone in which there will be only the necessary channels (for more details, see the product description)
- 3 Online users
- 4 Go to the appropriate channels by clicking on the channel name
- 5 Press and hold the PTT key to speak into the active channel (use the Esc key as a predefined hotkey)

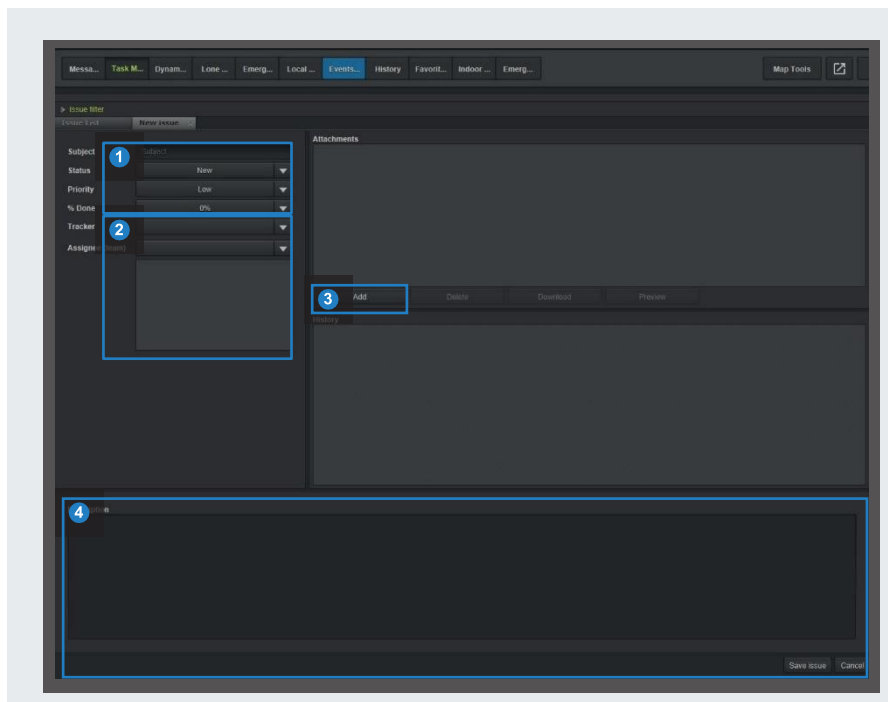


3.3 WRITE MESSAGES



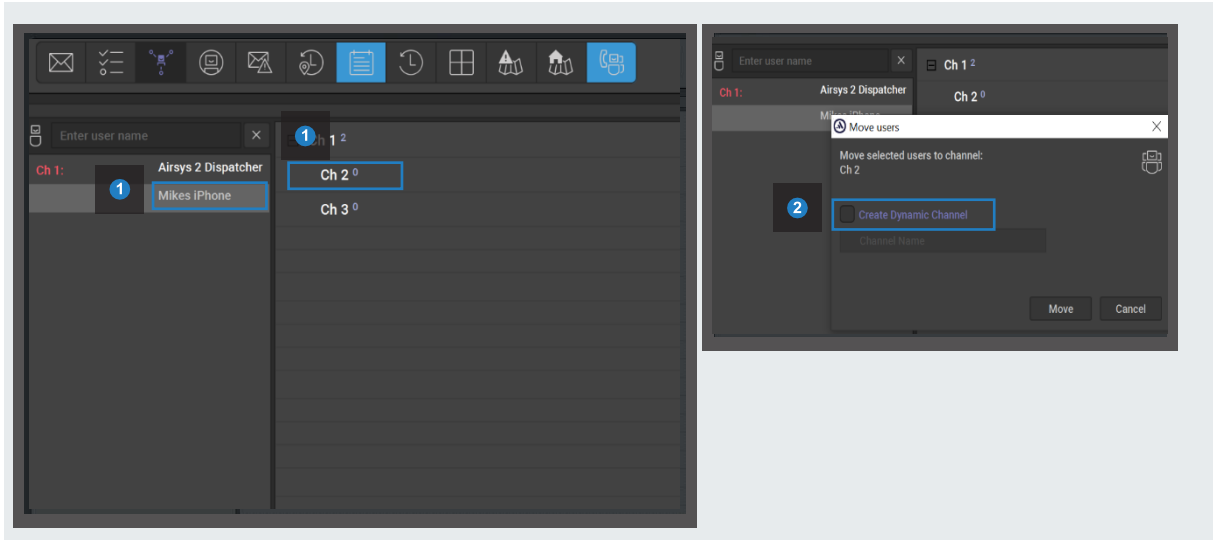
- 1 Click on Messaging plugin
- 2 Enter text in the text field and click on SEND (alternatively also enter key) Send
- 3 Attachment or status message

3.4 TASKMANAGER



- 1 Enter a subject and the following information (Status, Priority, % Done)
- 2 Select tracker and user (the tracker represents the backbone of the Task Manager and is required to generate an issue).
- 3 Enter description and optionally add an attachment
- 4 Apply settings

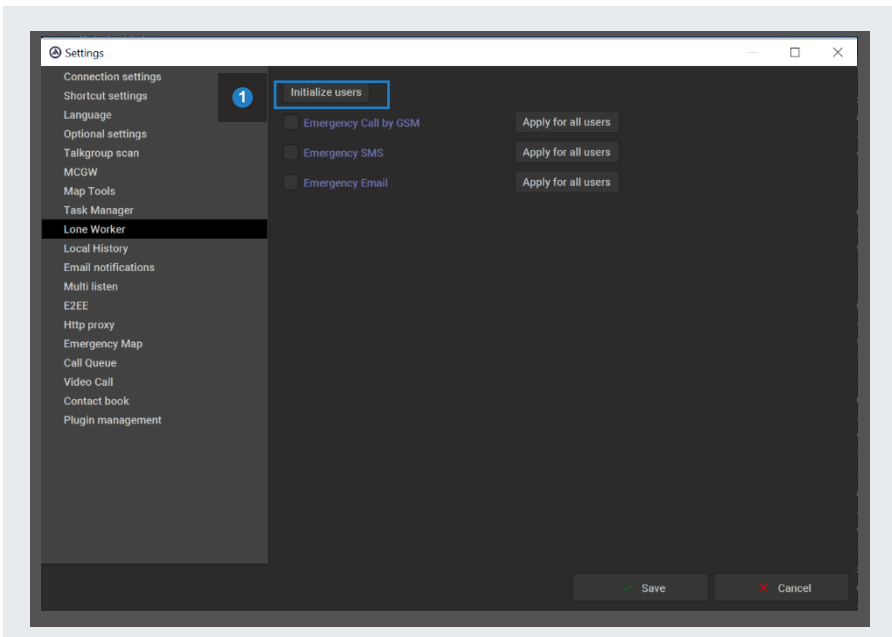
3.5 DYNAMIC GROUPS



1 Simply drag a user from one group to another through DRAG / DROP

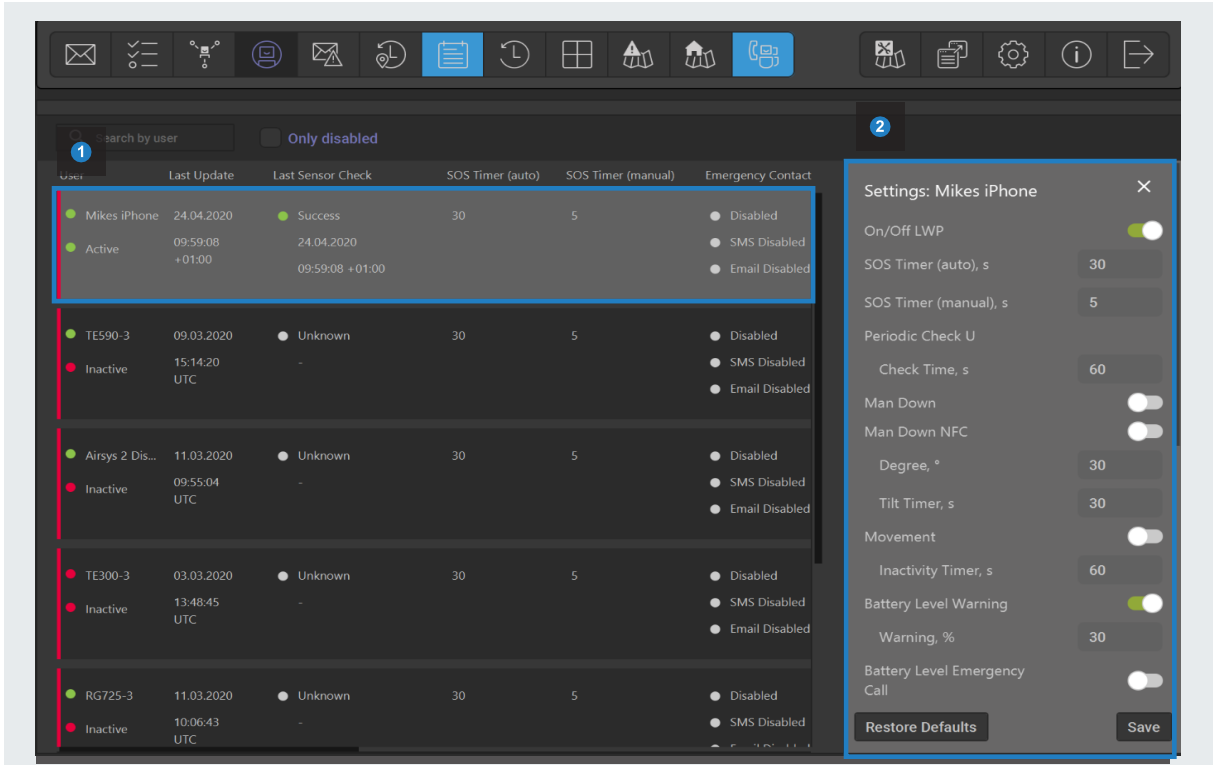
2 Then click on MOVE or click on CREATE DYNAMIC CHANNEL first to create a temporary subgroup.

3.6 LONE WORKER PROTECTION



1 In order to use the lone worker protection, you must first initialize the users in the settings of A.Rodon under LONE WORKER and then click on SAVE.

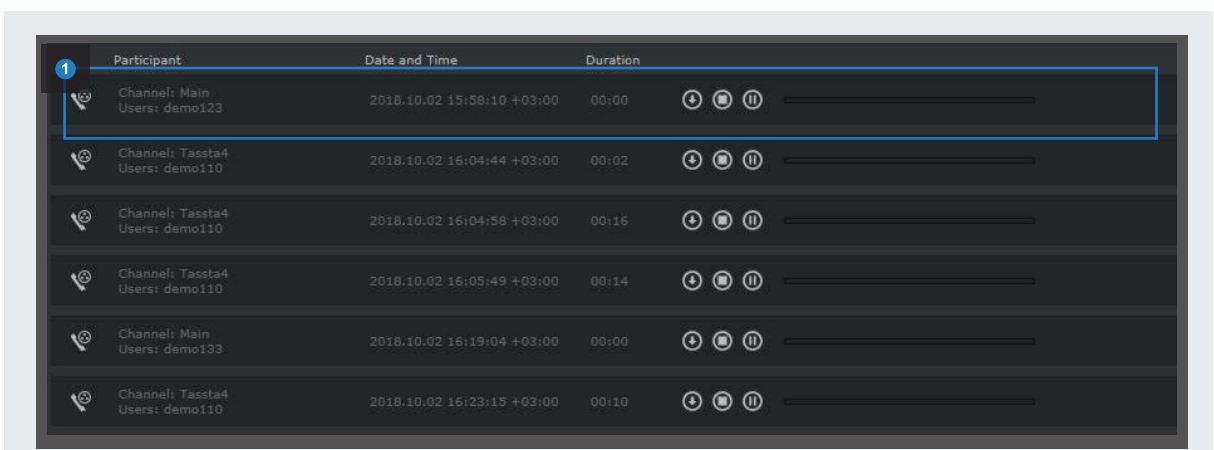
3.7 LONE WORKER PROTECTION



1 Select a user from the table for whom you want to enable Lone Worker Protection.

2 Activate the desired functions and enter the required parameters in the submenu. Then click on **SAVE**.

HISTORY

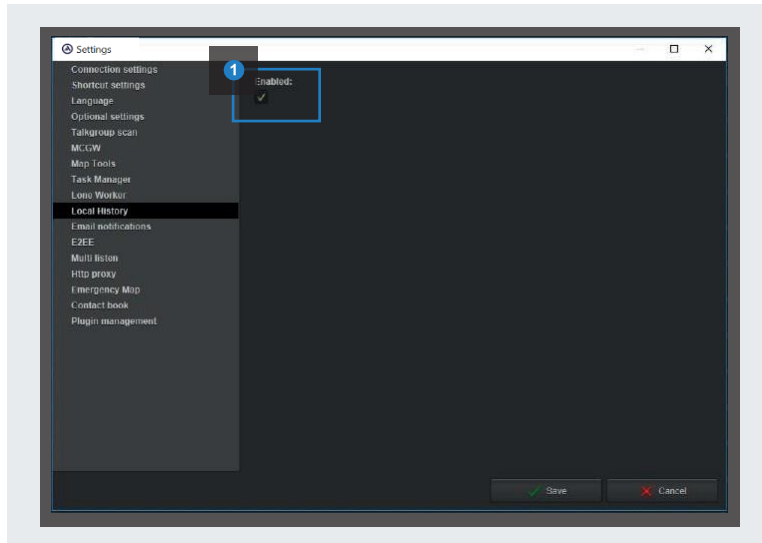


1 Select a record, and then press the **PLAY** button.






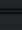



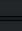
NOTE. The ability to listen to recorded calls is set separately for each user in the T.Commander settings

3.8 LOCAL HISTORY

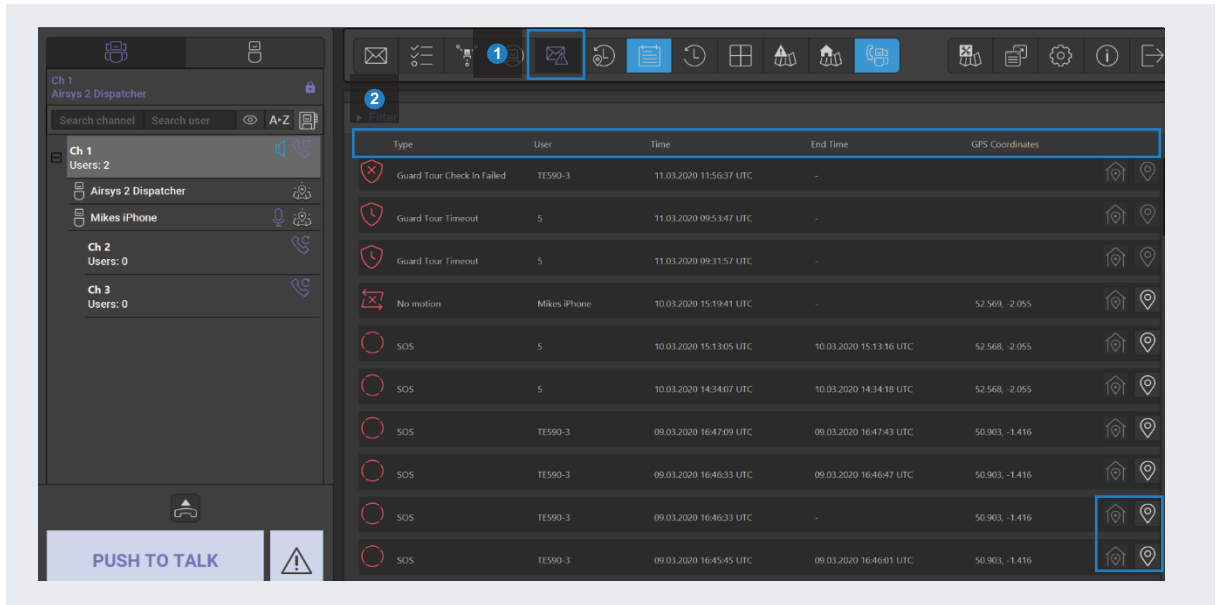


1 To activate the submenu, go to the settings to enable it.

The local history is stored locally on your computer, unlike the History that is taken from the server. The Local History submenu is identical to the History submenu.

Participant	Date and Time	Duration	
 Channel: Tassta6 Users: demo110	2018.10.04 09:43:12 +03:00	00:03	  
 Users: demo111	2018.10.04 10:17:50 +03:00	00:03	  

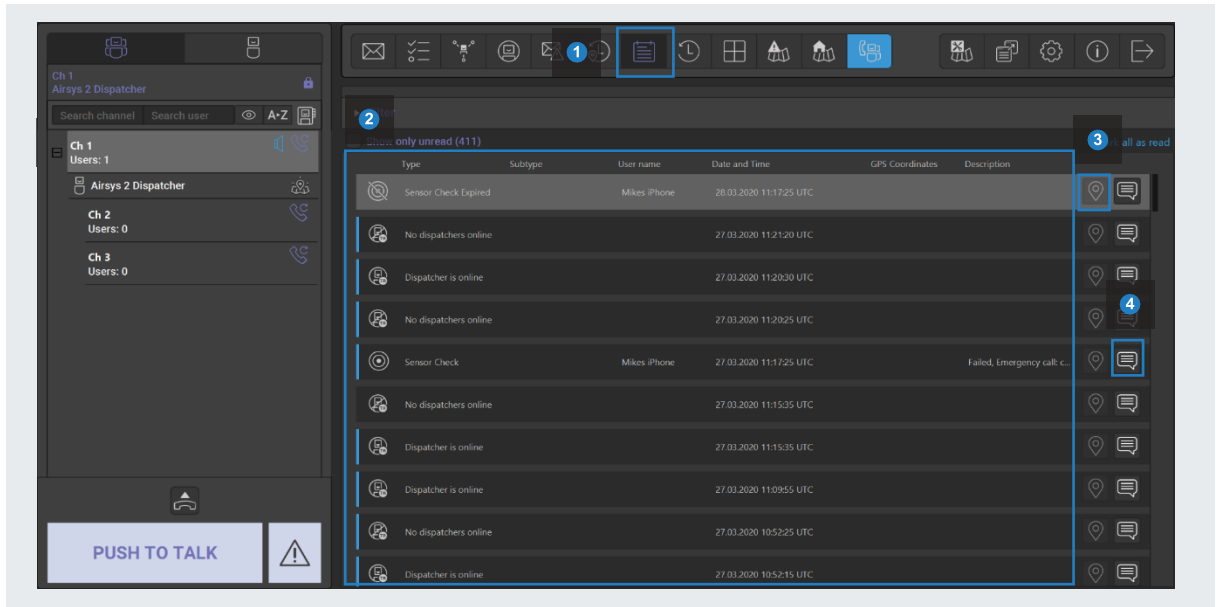
3.9 EMERGENCY AND EVENTS JOURNAL



- 1 Click on Emergency Journal in the main menu.
- 2
 - TYPE. A type of emergency message (it can be simple emergency call (SOS), some LWP features or Zone notifications). Depending on the type of emergency message, the corresponding icon is displayed in front of him.
 - USER. The user who faced an emergency.
 - TIME. Time and date when the emergency message was sent.
 - END TIME. Time and date when the emergency message was stop.
 - MESSAGE. Message that is specified in the zone for a particular situation
 - GPS COORDINATES. Coordinates of the place from where the emergency message was sent (GPS must be enabled on user's device).
- 3
 - A special button in each string is displayed to see the location of any emergency call/message.
 - If an emergency message contains GPS coordinates, then this button is highlighted and can be pressed. After pressing the button, A.Rodon opens the Map Tools and shows the location from where the emergency signal was made with emergency icon and information about it.

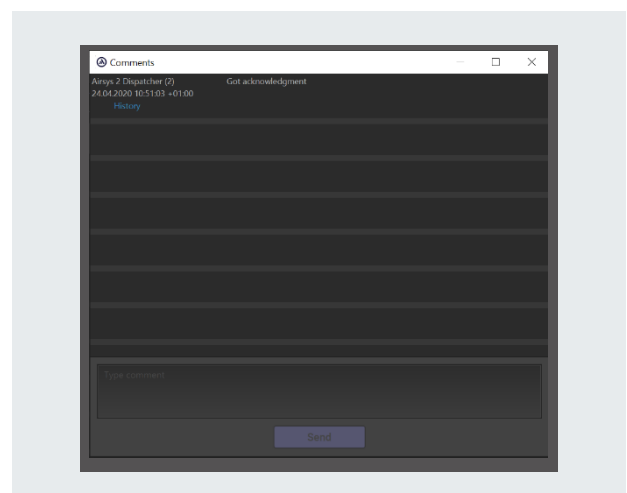


NOTE. The ability to use Emergency Journal tab is set separately for each user in the T.Commander settings.

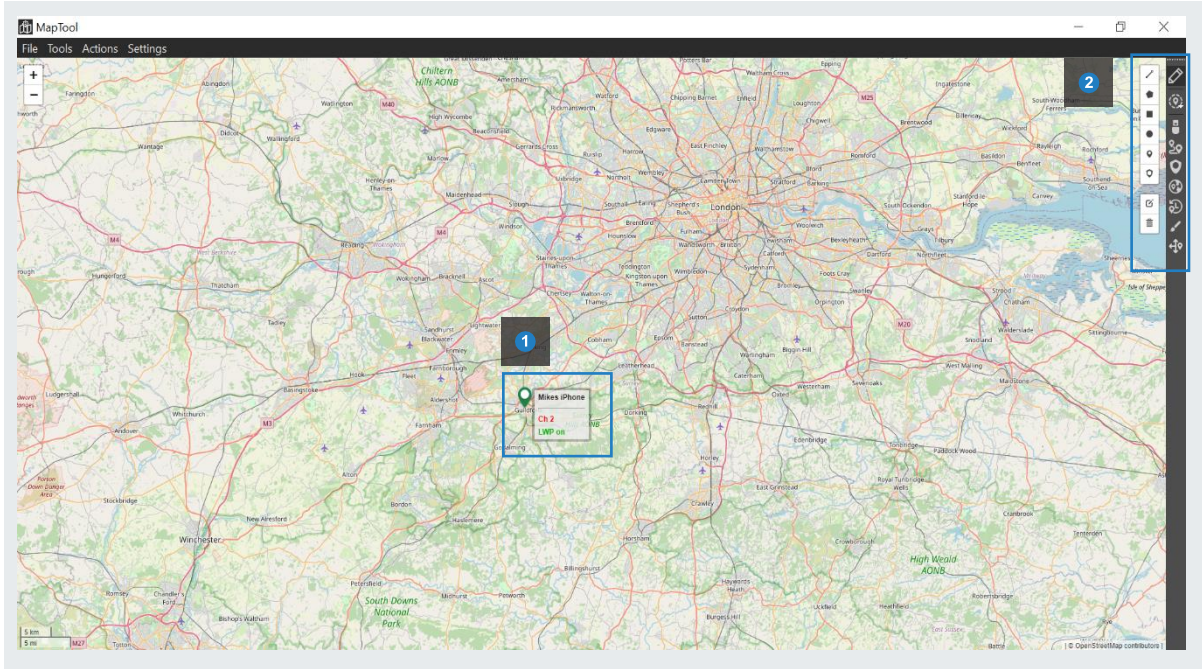


- 1 Click on Events Journal in the main menu:
- 2
 - TYPE. Type of incoming message. Depending on the type of incoming message, the corresponding icon is displayed in front of him.
 - SUBTYPE. Subtype of incoming message. USER NAME. The user that sent the message.
 - DATE AND TIME. Time and date when the incoming message was sent.
 - GPS COORDINATES. Coordinates of the place from where the message was sent.
 - DESCRIPTION. The part of event description (message).

Each new event is marked with a special label (blue bar on the side of the record). When you click on a record, the label disappears. This will mean that the operator is notified of this event. At the top right you can click "Mark all as read" and all marks will disappear.
- 3 A special button in each string is displayed to see the location of any emergency call/message. If an emergency message contains GPS coordinates, then this button is highlighted and can be pressed. After you press the button, A.Rodon opens the Map Tools and shows the location from where the emergency signal was made with emergency icon and information about it.
- 4 Leave comments on each record. Fill in the appropriate field and click Send. The history of all actions on this record will be displayed there.



3.10 MAP

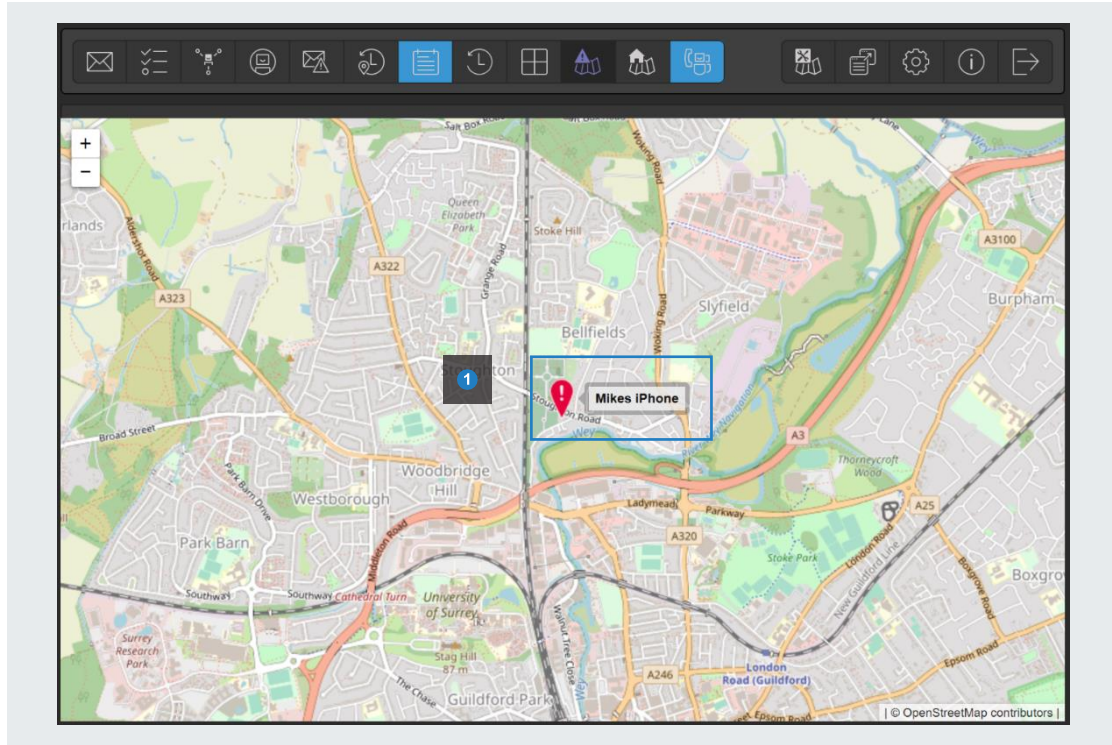


1 GPS position of users currently online.

2 Toolbar: Depending on the selected function, the corresponding toolbar opens. The functions can be found in the table.

- | | | |
|--|----------|--|
| | 1 | Allows user to create Geo Fences and Guard Tours |
| | 2 | Allows users to be selected on the map. |
| | 3 | Show user list |
| | 4 | Click to create Waypoints |
| | 5 | Click to create Guard Tours |
| | 6 | Click to create Zones |
| | 7 | View Tracking History by user and time period |
| | 8 | Change the group colours to differentiate |
| | 9 | Overlay your own detailed map of specific areas |

3.11 EMERGENCY MAP



- 1 GPS position of users who are currently making an emergency call.



BRING IT ALL TOGETHER